

Bulk Storage & Handling



- > All Poly Pallet Bin
- > Liner Bins
- > Maxi Bins
- > Bulka Bins
- > Silomaster
- > Bunds & Containment



All Poly Pallet Bin

Durable Palletisation

This multi-purpose forklift bin is of all-poly construction. Needing no support frame due to its unique ribbing, this bin offers extreme durability to bulk transfer applications.



Applications:

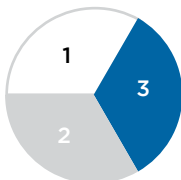
1. Food Processing
3. Bulk Parts Storage
4. Hazardous Goods
5. Waste Management
6. Raw Material Transfer
7. Fruit & Vegetable Transportation
8. Plastics Processing

Special Features:

- > Nest or Stack capability
- > Enclosed Fork pockets available for pallet rotation
- > Hygienic Food-Grade polyethylene
- > Ideal Pallet Size for Transportation
- > Bin stacks when rotated 180°
- > FEA Analysis Testing completed for strength

COLOUR RANGE

- 1 White
- 2 Light Grey
- 3 Blue



1 Optional Weather-Proof Lid

2 Reinforced Rim

3 Optional Enclosed Fork Pockets

^ APP100 NESTED

^ APP100 STACKED

CODE	DESCRIPTION	DIMENSIONS (inc GST)
APP100	All Poly Pallet Bin 1000ltr	1190L x 1190W x 1010H
APP100FC	All Poly Pallet Bin 1000ltr with fork plates	1190L x 1190W x 1010H
APPL	Sealed lid for All Poly Pallet Bin	

Liner Bins

Maximise Space, with Multi-Level Stacking

A proven performer, this pallet bin incorporates the rigidity of a metal frame with the durability of a polyethylene liner. Liners are easily & cost effectively replaced when worn, to further extend the life-span of this robust pallet bin.



Applications

1. Dry/Wet Bulk Transportation
2. Food Processing
3. Bulk Parts Storage
4. Hazardous Goods
5. Waste Management
6. Raw Material Transfer
7. Plastics Processing
8. Corrosives Containment



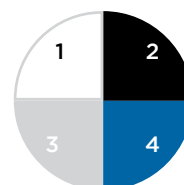
CODE	DESCRIPTION	DIMENSIONS (mm)
LB85	850ltr Liner only	1160L X 1160W X 800H
LBGF85	850ltr Liner Bin & Galv Frame	1160L X 1160W X 900H
LBAF85	850ltr Liner Bin & Aluminium Frame	1160L X 1160W X 900H
LB100	1000ltr Liner only	1160L X 1160W X 940H
LBGF100	1000ltr Liner Bin & Galv Frame	1160L X 1160W X 1040H
LBAF100	1000ltr Liner Bin & Aluminium Frame	1160L X 1160W X 1040H
LB145	1450ltr Liner only	1160L X 1160W X 1340H
LBGF145	1450ltr Liner Bin & Galv Frame	1160L X 1160W X 1440H
LBAF145	1450ltr Liner Bin & Aluminium Frame	1160L X 1160W X 1440H
LBLID	Lid for above Liner Bins	
LCLB	Lge Capacity Liner 2.85m ³	2170L X 1200W X 1100H
LCLBS	Lge Capacity Forklift Bin 2.85m ³ in Galv Frame	2260L X 1260W X 1220H
LCLID	Lge Capacity Bin Lid	

Special Features

- > Safe Multi-Level Stacking
- > Replaceable Liner
- > Hygienic Food-Grade polyethylene
- > Ideal Pallet Size for Transportation
- > Poly Liners available in 4 Sizes
- > Custom Frame Design Available

COLOUR RANGE

- 1 White
- 2 Black
- 3 Light Grey
- 4 Blue

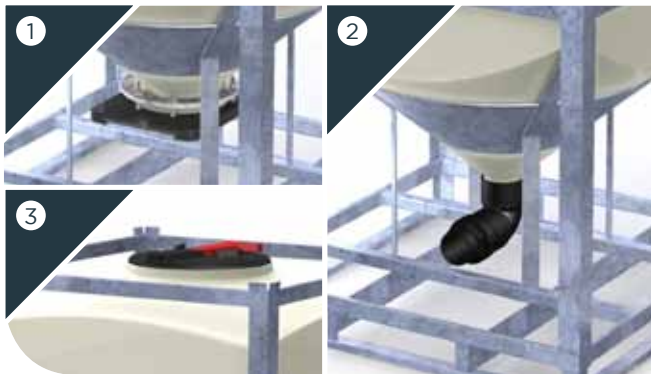


Maxi Bin™

Bulk Storage & Handling Efficiencies

With a current industry focus on OHS, Environmental Impact & Cost Efficiencies...

The Maxi Bin™ range delivers solutions to all these concerns, and more!

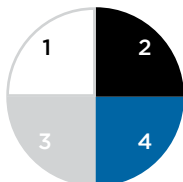


Outlet & Lid Options

- 1 **200mm POWDER SLIDE:** This proven Slide covers most dry bulk dispensing applications. Designed for low effort actuation and control.
- 2 **LIQUID OUTLET:** The 100mm BSP Outlet is suitable for Viscosities of 1 – 5000. This “All PE” outlet shares the same chemical resistance as the hopper.
- 3 **¼ TURN HATCH:** Simple and effective in operation, this 450mm hatch provides weatherproof protection for the bin contents. Hatch is opened by turning 90° and hinging outwards.

COLOUR RANGE

- 1 Natural
- 2 Black
- 3 Light Gray
- 4 Blue



From Plastic Granules to Syrup, Fertilizer & Pharmaceuticals, the excellent slippage characteristics of Polyethylene ensure these bins empty easily.

Advantages

- > Generous 1.5m³ of Storage Capacity
- > Eliminate bagging or bottling in smaller quantities
- > Engineered to be stacked for space efficiency
- > Smooth Food-Grade polyethylene for ease of cleaning
- > Standard Pallet Dimensions
- > Highly Resistant to most Chemicals, Oils & Acids
- > Weather-Proof: “remove the storage burden inside”
- > Low-Maintenance Galvanised Frame
- > Custom Outlet Options Available

CODE	DESCRIPTION	DIMENSIONS (mm)
MB150P	Maxi Bin 1.5m ³ - 200mm Powder Slide	1165L x 1165W x 2135H
MB150L	Maxi Bin 1.5m ³ - 100mm Liquid Outlet	1165L x 1165W x 2135H

Bulka Bins



> **The XL Frame Option:** This option offers a raised hopper height for bag or container filling

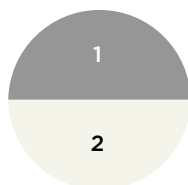


Outlet & Lid Detail

- 1 **LEVER ACTION SLIDE:** This mechanism provides low effort flow release and control.
- 2 **FILL HATCH:** This extra large fill hatch is entirely weather and vermin proof. It comes standard with bungee loops to effectively secure it to the hopper

COLOUR RANGE

- 1 Light Grey
- 2 Natural



Resolving Dry Bulk Dispensing needs

From Confectionary to Resin Granules, the Bulka Bin Range continues to provide new solutions to Dry Bulk Storage and Dispensing requirements



BSB12

BSB16

Advantages:

- > Easily Accessible Side Discharge
- > Stackable Stillage style frame
- > Extra Large Weather-Proof Hatchway
- > Pallet Loops for safe forklift transfer
- > Food Grade MDPE hopper
- > Weather & Vermin Proof
- > Low-Maintenance Galvanised Frame
- > Bag Hooks to secure bags while filling
- > Rust Proof Hopper

CODE	DESCRIPTION	DIMENSIONS (mm)	CAPACITY
BSB12	Bulka Bin 1.2m ³	1,200D x 1,500W x 1,600H	1.2 mtrs ³
BSB12XL	Bulka Bin Xtra Tall 1.2m ³	1,200D x 1,500W x 2,300H	1.2 mtrs ³
BSB16	Bulka Bin 1.6m ³	1,200D x 1,500W x 1,860H	1.6 mtrs ³
BSB16XL	Bulka Bin Xtra Tall 1.6m ³	1,200D x 1,500W x 2,560H	1.6 mtrs ³

Silomaster™ - Dry Bulk & Liquid Storage

Ultimate Volume Storage

5000L, 7500L & 10000L storage silos suitable for Dry Bulk and Liquid Storage or Processing Applications.

- > Rust proof LDPE construction.
- > Remote opening fill hatch.
- > UV protected & weather proof.
- > Colour coding available.

Advanced

The entirely new Silomaster™ range of Rotomoulded Silos represents the latest advances in Dry Bulk & Liquid Storage.

Engineered

Exhaustively Engineered and submitted to FEA testing at a range of specific gravities (SG). Silomaster™ silos are available for specified duties up to 1.4 SG.

Durable Construction

A One-Piece tank moulded from UV Stabilised, Food Grade MDPE and mounted to a fully Galvanised support structure.

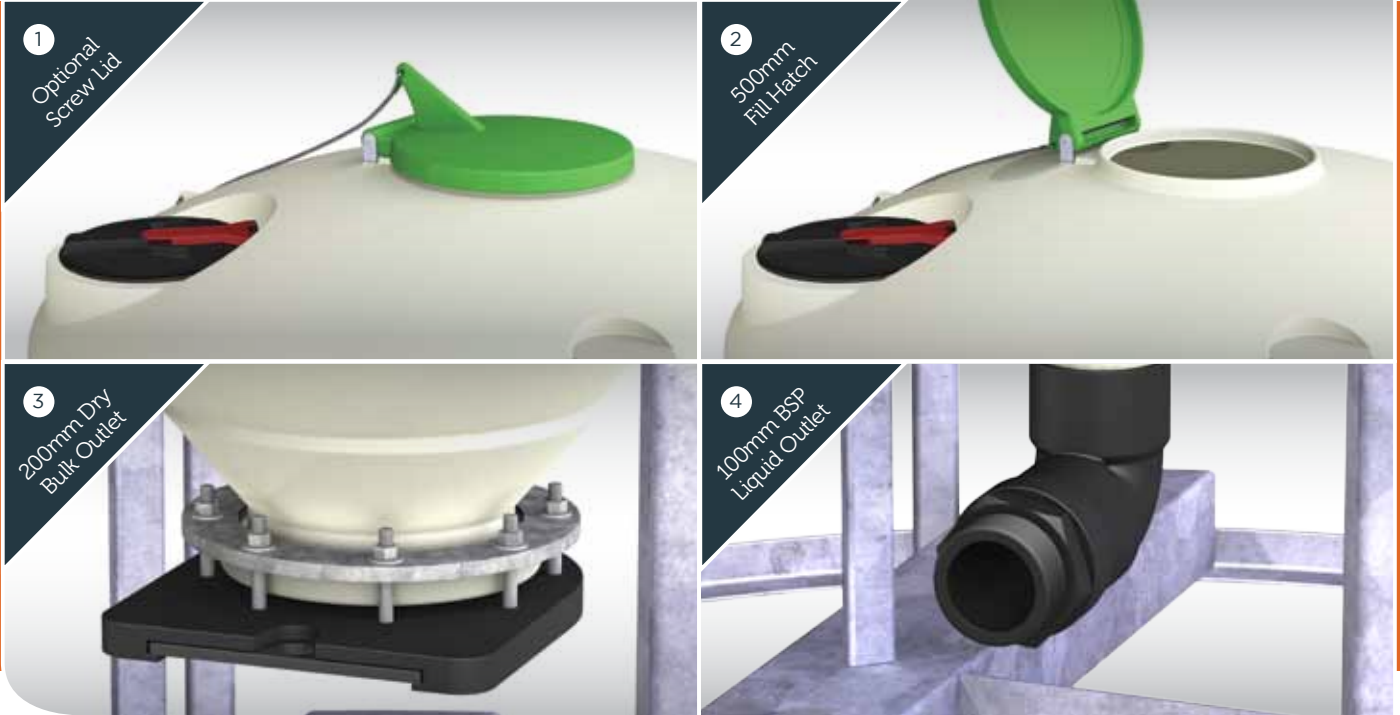
Re-locatable

For ease of repositioning, the support structure incorporates fork channels which allow the silo to be moved with a minimum 2ton Fork truck when empty. For Static Storage Only.



- 1 Central Access Hole
- 2 Hold down points
- 3 Eyelet tags
- 4 RHS Supports for conical sections
- 5 Vertical RHS supports
- 6 2-Way fork channels
- 7 Optional side mounted screw lid

Silomaster™ Features & Benefits



- 1**

OPTIONAL SCREW LID

 - > Large 450mm access.
 - > Equipped with breather if required.
- 2**

500MM FILL HATCH

 - > Weatherproof, remote opening.
 - > Incorporating 'Taper Seal'.
 - > Sprung hinge for closing.
- 3**

200MM DRY BULK OUTLET

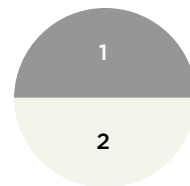
 - > Flow Control with custom outlets.
 - > Non-Jamming.
- 4**

100MM BSP LIQUID OUTLET

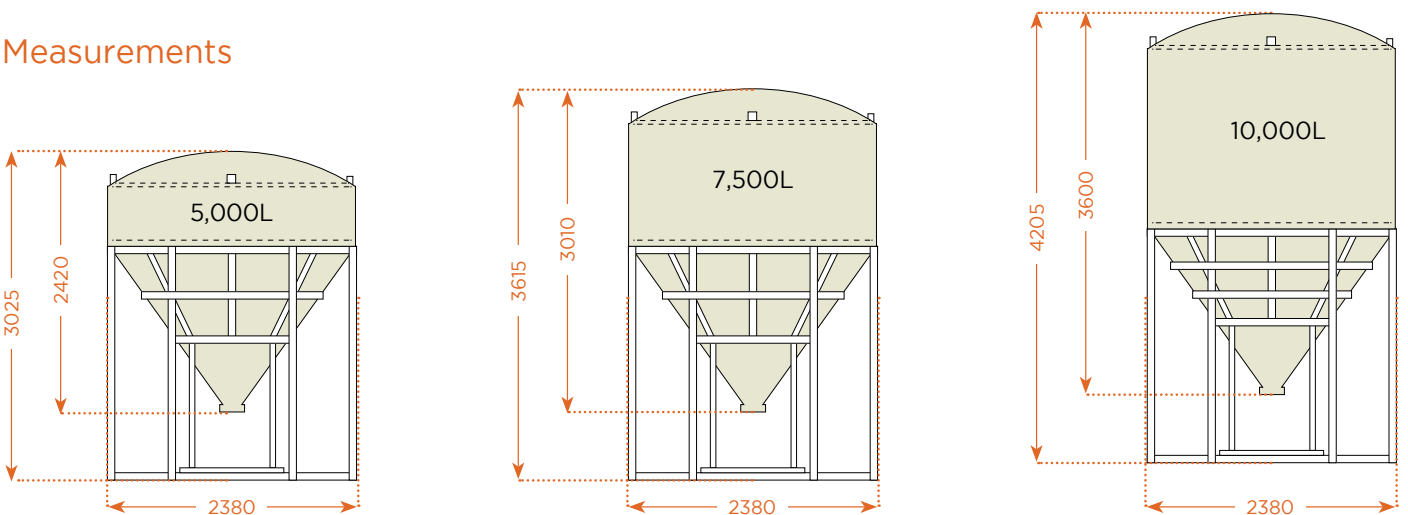
 - > Horizontal Discharge.
 - > Universal Connection.
 - > Custom Discharges.

COLOUR RANGE

- 1 Light Grey
- 2 Natural



Measurements



Bunds & Containment

Containment with High Chemical Resistance.



Utilising the High Chemical Resistance of Polyethylene, this range of Deep Bunds provides for many applications requiring secondary containment of Dangerous Goods.

Features

Common applications include Dispensing & Storage of Hazardous Chemicals, also suitable for the collection of used/contaminated spill control media.

Installation: Bunds are self supportive and simply require placement on a firm flat surface.

Construction: All Round Bunds are constructed entirely from LDPE with no metal components

Outlet: Bunds are supplied complete with a 75mm Outlet and Bung

Rectangular Bunds

High Capacity Rectangular Bund solutions are also available for dispensing & storage applications involving Diesel Fuel, Hypochlorite, Caustics and more. These Bunds can be customised to suit specific applications.



^ RECB65

CODE	DESCRIPTION	DIMENSIONS (mm)	CAPACITY
RB25	Round Bund	1000W x 470H	250ltr
RB50	Round Bund	1200W x 500H	500ltr
RB100	Round Bund	1600W x 600H	1000ltr
RB200	Round Bund	2100W x 600H	2000ltr
RECB65	Rectangular Bund	2750L x 2130W x 1010H	6500ltr

