

# Process Tanks & Vessels



- > Fire Service Water Storage
- > Water Collection & Treatment
- > Underground Liquid Storage
- > Chemical Storage
- > Agitated Tanks & Vessels
- > Custom Modifications & Accessories



# Process Tank Range



## Process Tanks

CODE	LITRES/GALLONS	DIAMETER	INLET HEIGHT	O/ALL HEIGHT	SG	OVERFLOW	OUTLET
PST200	Round Process Tank 200ltr	.60 m	.90 m	.90 m	1.0 - 2.0	12.00	6.00
PST600	Round Process Tank 600ltr	1.00 m	.95 m	.95 m	1.0 - 2.0	12.00	6.00
PST1000	Round Process Tank 1000ltr	1.00 m	1.50 m	1.50 m	1.0 - 2.0	12.00	6.00
PST1600	Round Process Tank 1600ltr	1.25 m	1.50 m	1.61 m	1.0 - 2.0	11.00/4.00	6.00
PST2270T	Round Process Tank 2270ltr Tall	1.30 m	1.92 m	2.00 m	1.0 - 2.0	11.00/5.00	6.00
PST2270LP	Round Process Tank 2270ltr Low Profile	1.70 m	1.20 m	1.31 m	1.0 - 2.0	11.00/4.00	6.00
PST3300	Round Process Tank 3300ltr	1.52 m	2.00 m	2.10 m	1.0 - 2.0	11.00/4.00	6.00
PST4500T	Round Process Tank 4500ltr Tall	1.70 m	2.10 m	2.20 m	1.0 - 2.0	11.00/4.00	6.00
PST4500LP	Round Process Tank 4500ltr Low Profile	2.15 m	1.38 m	1.58 m	1.0 - 2.0	11.00/3.00/7.00	6.00
PST5000	Round Process Tank 5000ltr	1.95 m	1.96 m	2.17 m	1.0 - 2.0	11.00/3.00/7.00	6.00
PST7100	Round Process Tank 7100ltr	2.15 m	2.12 m	2.17 m	1.0 - 2.0	11.00/3.00/7.00	6.00
PST9000	Round Process Tank 9000ltr	2.50 m	2.05 m	2.26 m	1.0 - 2.0	11.30/2.30/5.30/8.30	6.00
PST13600	Round Process Tank 13600ltr	3.10 m	2.10 m	2.45 m	1.0 - 2.0	11.00/2.00/5.00/8.00	4.00
PST22500	Round Process Tank 22500ltr	3.56 m	2.47 m	2.8 m	1.0 - 2.0	11.30/2.30/5.30/8.30	4.00
PST31700	Round Process Tank 31700ltr	4.10 m	2.61 m	3.04 m	1.0 - 1.5	11.30/2.30/5.30/8.30	4.00



- 1 White
- 2 Natural
- 3 Charcoal
- 4 Black
- 5 Beige
- 6 Wilderness

All tanks are certified to the Polyethylene tank standard for water & chemicals Standard AS/NZS4766:2006 Licence No. SMKP 21429

All measurements are approximate due to variable shrinkage during manufacture. Due to pigment variations with raw material manufacturers, colour shades may vary. Polymaster takes no responsibility for the quality of water held in a tank.



Quality Certified Company ISO 9001



Polyethylene Tank Standard for Water & Chemicals AS/NZS4766:2006

## Content Specific Gravities.

Polymaster Industrial Tanks and Vessels can be manufactured with increased wall thicknesses catering for Specific Gravities of contents between 1SG - 2SG and Operating Temperatures from -18° up to +60 Celsius.

All rated Specific Gravities are independently engineered and Finite Element Analysis approved. See SG column in the above table to ascertain the SG range available for the particular product displayed.

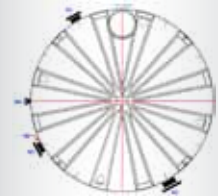
# Fire Service Water Storage

# Water Collection & Treatment



#### Applications:

- > Influent Settling Tanks
- > Balance Tanks
- > Bio-Reactor Tanks
- > Treated Effluent Storage



## Adequate Resource to respond in the event of a fire.

Building in a Remote Location? Or where mains water is insufficient for firefighting purposes?

Protect lives and assets with a Bulk Storage tank system, customised to the application. Supplying Fire Service Tanks to Fire Authority Standards for many years, Polymaster Industrial personnel can provide assistance during the design phase to arrive at the optimum configuration.

#### Features:

1. From ½" up to 12" Table E Flanged Outlets
2. All Fire Authority Connections available such as CFA, MFB, SAFB, Storz & Camlock Fittings
3. Anti-Vortex Internal Suction Assemblies are available to meet all Fire Authority Standards
4. Tank Modifications by Fully Qualified Personnel
5. Below Ground options Available (see page 16)

## Integrated Containment for water collection & treatment

#### Water Collection:

Assisting you towards responsible water use, Polymaster Industrial Tanks offer various interconnection configurations for high volume and integrated water collection.

- > Rain Harvest Retention
- > Process Water Collection
- > Storm Water Detention
- > Waste Water Treatment
- > Filtration Systems

#### Water Treatment:

Polymaster Industrial Tanks are not only well proven for Water Treatment applications, they are also Certified to Australian Standards as below:

- AS/NZS 4766:2006 Polyethylene storage tanks for water and chemicals

- AS/NZS 4020:2002 Aust. Std. for drinking water

#### Capabilities:

1. Single Tank Containment of up to 31,700 Litres
2. Corrugated or Smooth Wall Tanks Available
3. Internal Skimming & Overflow Assemblies Available
4. HDPE welded outlets from 20mm up to 315mm
5. Remote Level Indication available (see page 23)

# Underground Liquid Storage

## Underground - Out of Mind

With the smallest footprint in the industry, Polymaster Industrial Underground Tanks give you the maximum capacity for the minimum excavation.



**1 The Sub™ - US5000**  
Dimensions (mm): 3470L x 1600W x 1870H

**2 The Bell™ - US2250**  
Dimensions (mm): 1870L x 1600W x 1870H

### Approved and Tested

- > Fully tested polyethelene tank designed to withstand ground and water pressure at depth.
- > Engineered by geotechnical experts including finite element analysis (FEA). These calculations are provided with the tanks.
- > Anti-flotation design and engineering specifications completed to AS1170.
- > Sealed locking tamper proof lid.



Moulded spigot on each tank allows tanks to be joined using flexible tank connectors as shown.

### Bell Tank™ - 2250 ltr underground rainwater tank

CODE	DESCRIPTION
US2250	Underground Tank 2250ltr c/w Lid

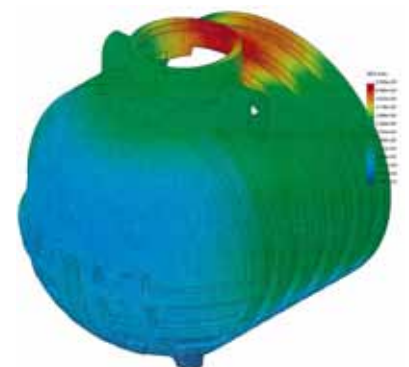
### Sub Tank™ - 5000 ltr underground rainwater tank

CODE	DESCRIPTION
US5000	Underground Tank 5000ltr c/w Lid

### Underground Tank Accessories

CODE	DESCRIPTION
UMFO	Backflow prevention device
USRM	Riser Shaft for Underground Tank


FEA Tested for strength



# Chemical Storage



## Corrugated Tanks

-  1 Threaded Outlets available in HDPE, Brass & 316 Stainless Steel
- 2 Translucent Natural MDPE allows for visual Level Monitoring
- 3 Several Vent variations available
- 4 Clear Sight Tube Level Indication, also see page 23
- 5 Welded Flanged Outlets available:
- 6 Optional Top Fill Assemblies

## Product Certification

All Polymaster Industrial Corrugated Wall Tanks are certified to: AS/NZS 4766:2006 Polyethylene storage tanks for water and chemicals. License No: SMKP 21429

Polymaster Industrial also holds ISO9001 Quality Management System certification.



## Proven Chemical Resistance

Long recognised for its resistance to aggressive media, LLDPE Tanks are suitable for the containment of most corrosives including chlorides, detergents, salts, and variable PH solutions.



## Smooth Wall Tanks:

Polymaster Industrial also offers smooth wall tank options from 2000L up to 22,500L. Manufactured in accordance to: AS/NZS 4766:2006, these tanks feature straight sides and a domed roof.

### Features:

- > Available in Specific Gravities from 1 > 2SG
- > Mechanical Fittings can be installed in most positions
- > 22,500L tank features a small 3.05m footprint
- > Levels can be visually monitored when moulded in Natural LLDPE

## Extra Resistance

Where added resistance is required, Polymaster Industrial tanks are available in Hexathene 7036FR. This special resin grade has a higher density and extra resistance to Diesel Fuel and other plasticiser chemicals.

*For a list of common Hazardous Chemicals and their compatibility for storage in LLDPE tanks, refer to page 4 of this Catalogue.*

# Agitated Vessels



## Applied Mixing & Blending Packages

### Agitated Tanks

Customised Vessels and Mechanisms to meet your Mixing and Blending requirements. Polymaster Industrial works closely with mechanism engineers & manufacturers to ensure the correct agitator is applied to your specified duty.

### Features

- > Vessels ranging from 200L - 31,700L
- > Agitator options from 0.18Kw - 5Kw.
- > Custom agitator mechanisms available
- > Internal & External pipe work available
- > High Specific Gravity vessels available

### Standard Mixer Options

Code	Description
AVM33S	Agitator to suit 200L - 3,300L tanks and vessels, Viscosities from 1 - 5000.
AVM45D	Agitator to suit 2,000L - 4,500L tanks and vessels, Viscosities from 1 - 5000. Twin impeller.
AVM90S	Agitator to suit 4,500L - 9,000L tanks and vessels, Viscosities from 1 - 5000.
AVM90D	Agitator to suit 4,500L - 9,000L tanks and vessels, Viscosities from 1 - 5000. Twin impeller.

Mechanisms are selected according to specified duties, for larger vessels and high viscosities, standard options may vary.

### Self Draining Vessels:

These Open Vessels offer self draining functionality, and are capable of complete discharge of contents following the mixing process. See following page for more information.

### Features

- > Suitable for varying viscosity solutions
- > Easy access into vessel for cleaning & maintenance
- > Range of external Valves and Plug assemblies
- > Up to 9000L Mixing Capacity
- > Custom Lids and Bracketing available

# Self Draining Vessels

## Multi-Function Open Process Vessels

Open Process Vessels provide excellent access to the contents within the vessel and easy de-contamination. These vessels are highly resistant to corrosives and are therefore suitable for acid dipping & pickling processes. Generous floor gradients promote the complete discharge of contents when the vessel is emptied.

### 1. Lids & Covers:

The FT2000B is available with an optional moulded Lid. Custom lids or covers are available for all other vessels in the range.

### 2. Outlet Connection:

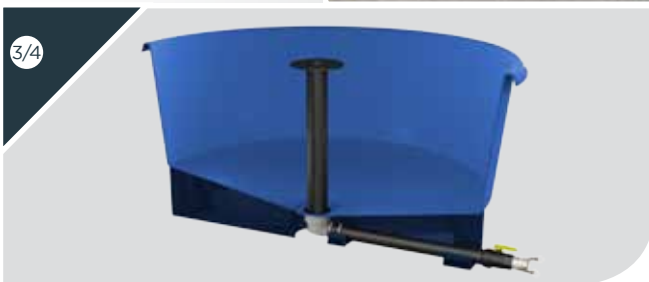
Outlet Sumps incorporates standard diameter Plumb-Quick™ connections for easy adaption to PE, ABS & PVC pipe.

### 3. Overflow Assemblies

Custom Overflows and Tundish assemblies can be incorporated for level control or skimming purposes.

### 4. Custom Outlet Option

Custom outlet Pipework options include Camlock, Flanges and BSP threaded end fittings. Valve Assemblies available include Ball-Valves, Butterfly & Sluice Valves.



CODE	DESCRIPTION	FLOOR GRADIENT	OUTLET SIZE (OD)
FFL200	Vessel with flat base 200ltr		
SDV500B	Self Draining Vessel & base 500ltr	1:5	75mm
SDV1000B	Self Draining Vessel & base 1000ltr	1:14	75mm
SDV2000B	Self Draining Vessel & base 2000ltr	1:6	75mm
SDV5000B	Self Draining Vessel & base 5000ltr	1:10	110mm
SDV9000B	Self Draining Vessel & base 9000ltr	1:16	110mm
SDVL2000	2000ltr Vessel lid only		