

Pipeline Tanks

DEPENDABLE AND PROVEN PACKAGES

These tank packages are designed to be connected to pipelines for stock and domestic water supply.



PLT22500

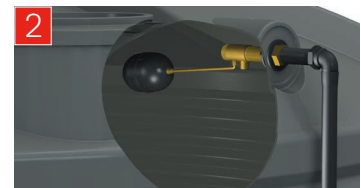
PIPEWORK FOR ILLUSTRATION PURPOSES ONLY

QUALITY CERTIFIED

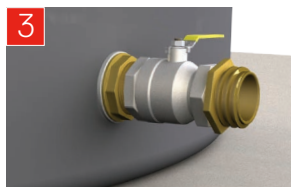
Polymaster Pipeline Tanks are fully certified and are supplied with Watermark approved brass float valves certified to AS1910, as recommended by pipeline authorities.



1 x 90mm overflow / breather & screen (not shown)



25mm fitting & WFV1 float valve assembly adjacent inspection cover
MAX. PRESSURE 300KPA / 43PSI RATING



1 x 65mm CFA/CFS coupling



Additional 50mm outlet & ball valve

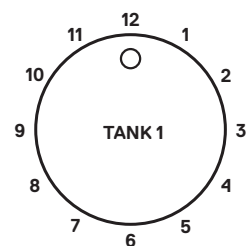
POLYMASTER HAS BEEN SPECIALISING IN PIPELINE TANKS & TROUGHS SINCE 1994

SOME OF THE PIPELINES WE HAVE SERVICED:

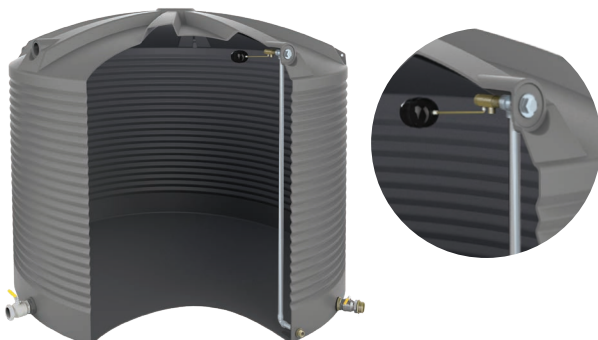
- Normanville
- Broken Creek
- Tungumah
- Waranga Western
- Wimmera Mallee
- Goulburn Murray Water
- East Loddon
- Mitiamo
- Euston
- Wanganella

STANDARD FITTINGS & LOCATIONS

- 12:00 Inspection cover
- 2:30 Overflow / Breather
- 4:00 50mm brass outlet & ball valve
- 8:00 CFA2 - CFA connection
- 11:30 Fitting & WFV1 float valve



OPTIONAL INTERNAL FIT OUT AVAILABLE



CODE	DESCRIPTION
PLT9000	9,000Ltr Corrugated Wall Pipeline Tank
PLT13600	13,600Ltr Corrugated Wall Pipeline Tank
PLT22500	22,500Ltr Corrugated Wall Pipeline Tank
PLT31700	31,700Ltr Corrugated Wall Pipeline Tank
PLT50KL	50,000Ltr Smooth Wall Pipeline Tank
PLTPC22500*	22,500Ltr Smooth Wall Pipeline Tank (15 YEAR WARRANTY)
PLTPC27000*	27,000Ltr Smooth Wall Pipeline Tank (15 YEAR WARRANTY)