

CERTIFIED

Slendastyle™ Tanks

OUR QUALITY
These tanks are certified to the RAINWATER TANK STANDARD AS/NZS4766:2006



CERTIFIED

PolyChoice Slim Tanks

" Affordable packages for residential & commercial applications "



URBAN WATER CONSERVATION

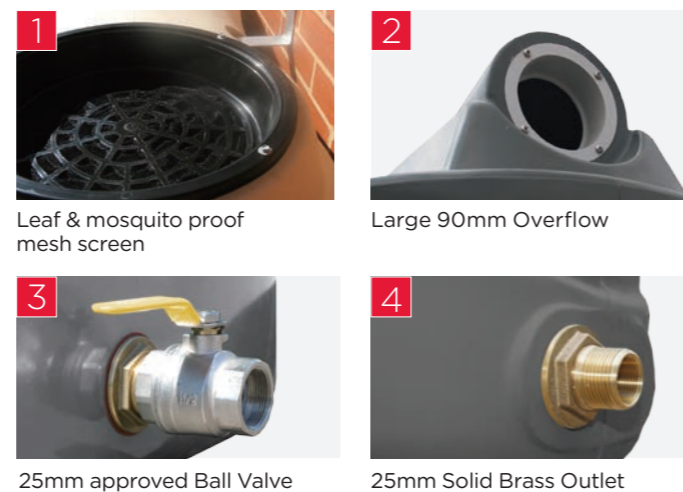
Great looking solutions for urban water conservation. The Slendastyle™ range provides slim-profile water storage options up to 5000L.

The Slendastyle™ rainwater tanks have been designed to hold the maximum volume of water for the minimum surface area used.



SLENDASTYLE™ TANK BENEFITS

- Space saving modern design ideal for tight spaces
- Hand grips for easy lifting
- Can be coupled to other tanks for even greater volume
- Available with submersible pump, packaged pump unit and garden pump systems
- 22 Colorbond™ colours to match your home! Pg.15



SLENDASTYLE™ TANK SPECIFICATIONS * Internal or external pump systems to be specified at time of order

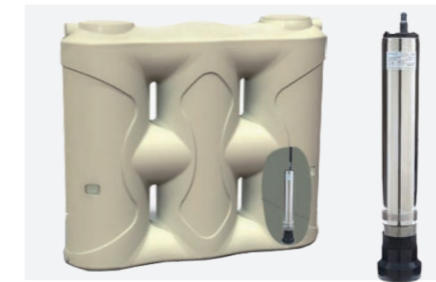
CODE	DIMENSIONS (mm)	CAPACITY	OVERFLOW POSITION	OUTLET POSITION	SIEVE POSITION
SLST600	1220L x 580W x 1265H	600 ltr (132 gal)	12:00 Std/6:00 Alt	6:00 Std/12:00 Alt	6:00 Std/12:00 Alt
SLST1050	1460L x 690W x 1515H	1050 ltr (230 gal)	12:00 Std/6:00 Alt	6:00 Std/12:00 Alt	6:00 Std/12:00 Alt
SLST2000	2290L x 600W x 2050H	2000 ltr (440 gal)	12:00 Std/6:00 Alt	6:00 Std/12:00 Alt	6:00 Std/12:00 Alt
SLST3000	2570L x 790W x 2050H	3000 ltr (660 gal)	12:00 Std/6:00 Alt	6:00 Std/12:00 Alt	6:00 Std/12:00 Alt
SLST5000	3290L x 1020W x 2010H	5000 ltr (1096 gal)	12:00 Std/6:00 Alt	6:00 Std/12:00 Alt	6:00 Std/12:00 Alt
PCST2000	2290L x 600W x 2050H	2000 ltr (440 gal)	12:00 Std/6:00 Alt	6:00 Std/12:00 Alt	6:00 Std/12:00 Alt
PCST3000	2570L x 790W x 2050H	3000 ltr (660 gal)	12:00 Std/6:00 Alt	6:00 Std/12:00 Alt	6:00 Std/12:00 Alt

Household Pump Systems

There are 2 options available for connecting rainwater to your house.

1. INBUILT SUBMERSIBLE PUMP SYSTEM

- High volume/pressure stainless steel submersible pump suitable for single-storey and double-storey dwellings
- Automatic switching device fitted for rain to mains automatic changeover with no water supply interruption



▲ Submersible pump option

2. PACKAGED PUMP UNIT

The Packaged Pump Unit sits neatly beside any size tank and includes a pump protected in a poly pump house cover.



▲ PH400 or PH550

Please specify which pump system you require at time of order.

Garden Pump Systems

Using stored rainwater on your garden.

Place Complete Packaged Pump unit (as shown) beside your tank with garden tap attachment.

- 40lpm garden pump
- Constant pressure controller for ease of watering
- Pump house to protect pump



▲ PHGPS

CODE	DESCRIPTION
SLST1050AP	1050 ltr Slendastyle Tank with Submersible Pump System
SLST1050GPS	1050ltr Slendastyle Tank with Garden Pump System
SLST2000AP	2000 ltr Slendastyle Tank with Submersible Pump System
SLST2000GPS	2000 ltr Slendastyle Tank with Garden Pump System
SLST3000AP	3000 ltr Slendastyle Tank with Submersible Pump System
SLST3000GPS	3000ltr Slendastyle Tank with Garden Pump System
SLST5000AP	5000 ltr Slendastyle Tank with Submersible Pump System
SLST5000GPS	5000 ltr Slendastyle Tank with Garden Pump System
PCST2000AP	2000 ltr PolyChoice Tank with Submersible Pump System
PCST3000AP	3000 ltr PolyChoice Tank with Submersible Pump System

FOR PRICES CONTACT YOUR POLYMASTER DISTRIBUTOR.

All measurements are approximate due to variable shrinkage during manufacture. Due to pigment variations with raw material manufacturers, colour shades may vary. Smaller rainwater tanks need regular maintenance if drinking quality is to be maintained. Polymaster takes no responsibility for the quality of water held in a tank. *Free delivery only applies to some regions and tank sizes. Contact us for details.