



Farm Equipment

- B-Ute Boxes
- Truck Water Tank
- Handi Tank
- Tractor Roofs
- Grain Shovel
- Grain Hopper

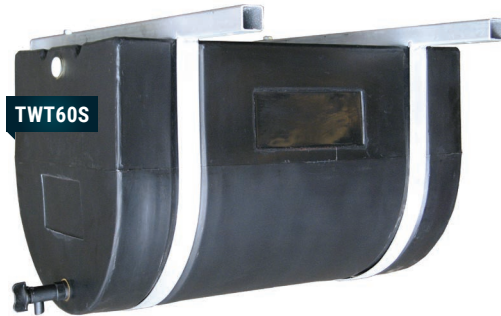
✓ UV resistant
polyethylene
will not rust or corrode

! Light weight, flexible and
ribbed for strength
Rigid food grade
polyethylene

10

Vehicle Water Tanks / B'ute Boxes

Truck Water Tank



TRUCK WATER TANK / HANDI TANK COLOUR RANGE



1. Black 2. White 3. Light Grey

- 60 litre capacity
- 20 mm tap provided at the base of the tank
- 20 mm cap provided at top for easy filling
- 600L x 390W x 390H mm
- Mounting brackets

Handi Tank



HT28P

- 28 ltr capacity
- 20 mm brass tap provided at the base of the tank
- 20 mm cap provided at top for easy filling
- 415L x 240W x 380H mm
- Plate for easy mounting

CODE	DIMENSIONS (mm)	CAP.
TWT60	Truck water tank only	60 ltr
TWT60S	Truck water tank with mounting bracket and strap	
HT28	Handi tank only	28 ltr
HT28P	Handi tank with mounting plate	
BUC26	1,170L x 570W x 400H - (Colour)	266 ltr
BUC14	970L x 400W x 360H - (Colour)	140 ltr
TBC20	Tradesman Box 980L x 390W x 600H	200ltr

B' UTE BOX COLOUR RANGE



1. Black 2. White 3. Blue 4. Red 5. Light Grey

- Flush zinc mounted hardware
- Raised weather resistant lid seal
- Standard with removable internal tray

B' ute boxes **PERFECT FOR YOUR UTE STORAGE** → See photo page. 59



BUC14



BUC26



TBC20

Farm Equipment

Lightweight tough poly (UV resistant)

Grain & Fertilizer Shovel

→ 1,100H

COLOUR RANGE



1. Red 2. Heritage Green



3. Blue 4. White



5. Yellow



GS40

Grain Hopper



GAB2

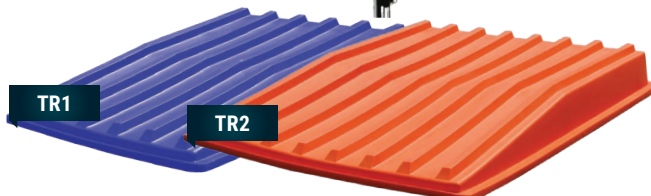
- Wide support base and low profile
- Suits augers up to 240mm / 9.5"
- Crease resistant - flexes back to shape
- Equipped with strap to hold onto auger
- Dimensions 1100L x 1200W x 540H



Tractor Roofs



MTR2-2



TR1

TR2

TRACTOR ROOFS COLOUR RANGE



1. Red 2. JD Green 3. Blue 4. White 5. Orange

MOUNTING BRACKET AVAILABLE

Designed for Rops frames, 3 size available

- TR0 -Ride on mowers
- TR1 -Tractors up to 45HP
- TR2 - Tractors above 45HP

CODE	DESCRIPTION
TR0	Tractor roof - small 1,200L x 850W x 120H
TR1	Tractor roof - med. 1,530L x 1,140W x 150H
TR2	Tractor roof - lge. 1,830L x 1,500W x 200H
MTR0-2	Mounting bracket for TR0, 2 post
MTR0-4	Mounting bracket for TR0, 4 post
MTR1-2	Mounting bracket for TR1, 2 post
MTR1-4	Mounting bracket for TR1, 4 post
MTR2-2	Mounting bracket for TR2, 2 post
MTR2-4	Mounting brackets for TR2, 4 post
MTR2-LGEKIT	Large kit required in addition for wide post rops