



# Agriculture & Farming

# Liquid Fertiliser Storage



## Self Draining Tanks – Key Features

- Completely self-draining tank base (100% drainage)
- To suit liquids up to to 1.5SG
- Top fill kit – 2" (50mm) SS camlock with ball valve
- Sight tube level indicator
- 2" (50mm) SS outlet with ball valve + camlock
- 90mm overflow/breather (mesh screen)
- 600mm vented screw lid for easy access

## Colour Range



## Self Draining Tanks – Product Range

Code	Capacity (Litres)	Diameter (mm)	Overall Height
LFTSDT23000	23,000	3450	3054
LFTSDT28000	28,000	3450	3601
LFTSDT33000	33,000	3450	4149





## Flat Bottom Tanks – Key Features

- Heavy duty construction to suit liquids up to 1.4SG
- Level indicator as standard
- Optional top fill kit
- Inspection cover
- Standard with 50mm Stainless Steel Outlet, Ball Valve and Camlock

## Flat Bottom Tanks – Product Range

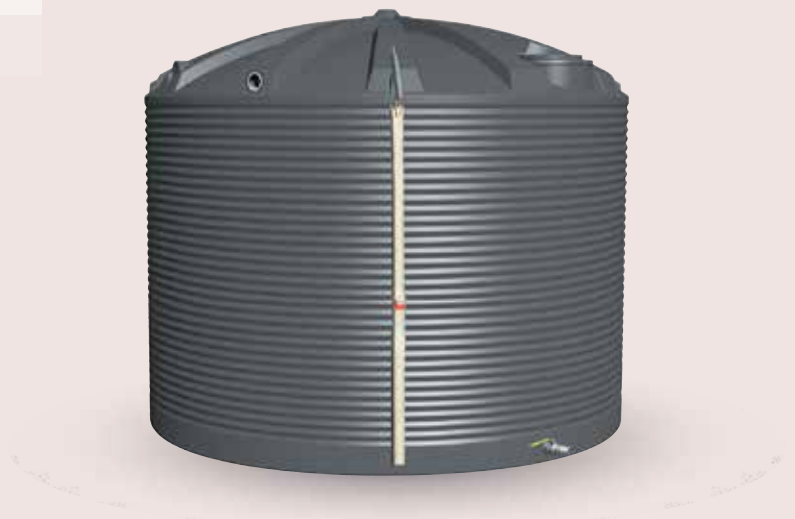
Code	Capacity (Litres)	Diameter	Overall Height	Outlet Size	Top Fill Kit
LFT9000	9,000	2500	2260	50	LFTK
LFT13600	13,600	3100	2450	50	LFTK
LFT22500	22,500	3560	2800	50	LFTK
LFT31700	31,700	4100	3040	50	LFTK
LFT50KL	50,000	4600	3440	50	LFTK

Standard Fittings and Locations	
12:00	Inspection Cover
12:30	2" Stainless Steel Outlet (LH02SS)
12:30	2" Stainless Steel Camlock (bottom fill connection)
12.30	2" Stainless Steel Ball Valve
1:30	Liquidator - True Level Indicator (LQ01)
2:30	Breather / Overflow

3" Stainless Steel Upgrade Option
3" Outlet (LH03SS)
3" Ball Valve (SSBV3)
3" Camlock (SC80-F)



LFTK  
\*Optional extra



LFT22500  
\*Pole not included

# Fertiliser Mixing Tanks



## Key Features

- No internal pipework within tank to get in the way
- Self draining tank with integrated moulded sump connects to PVC 65mm, 100mm for 5,000L & 9,000L
- 10 degree sloping base
- 50mm Camlock with base & venturi set up
- Pumps to suit venturi system available

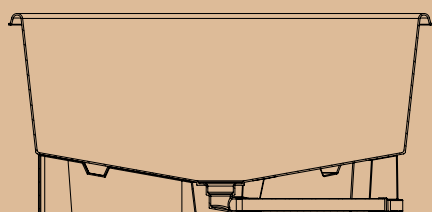
## Fertigation Tank + Base & Venturi Fitout – Product Range

Code	Capacity (Litres)	Dimensions	Lid
FT2000B+V	2,000	2000 DIA x 1000 H	FTL2000
FT5000B+V	5,000	2850 DIA x 1180 H	
FT9000B+V	9,000	3500 DIA x 1280 H	
FTL2000	Lid to suit 2,000L Fertigation Tank		2180 DIA

## Recommended Pump for Venturi Setup

Code	Description	Engine/Pump	Power (HP)	Head	Flow (LPM)	Inlet	Outlet	Warranty
HTP750VR	Chemical Transfer Pump Honda 6.5HP	Honda/Onga	6.5	40m	750	50mm	50mm	2 years

## Diagram



Vortex Plate



Venturi Agitators



Camlock Connection



Petrol or Diesel pumps available



\*PVC pipe not included



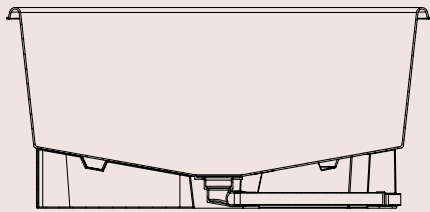
# Aquaculture



## Product Range

Code	Capacity (Litres)	Diameter	Overall Height	Outlet Size	Top Fill Kit
FT200	200L Flat Bottom Tank	800 DIA x 560 H			
FT500B	500L Tank + Base	1000 DIA x 1000 H	APRS	80mm	WCK01
FT1000B	1,000L Tank + Base	1040 DIA x 1200 H	APRS	40mm	WCK01
FT2000B	2,000L Tank + Base	2140 DIA x 1000 H	APRS	150mm	WCK01
FT5000B	5,000L Tank + Base	2850 DIA x 1180 H	APRS	120mm	WCK02
FT9000B	9,000L Tank + Base	3500 DIA x 1280 H	APRS	100mm	WCK02
FTL2000	Lid to suit 2,000L Tank	2180 DIA			

## Diagram



\*PVC pipe not included



FT9000B



FT5000B



FT1000B

# Round Water Troughs



## Master Tub Troughs – Key Features

- Easy to service float valves
- Full float protection
- Drain cap at very base of trough so maximum amount of water will empty when draining
- Raised float allows trough to fill completely

## Master Tub Troughs with float – Product Range

Code	Capacity (Litres)	Dimensions	Float Inlet	Pressure	Drain	Drain Cap	Float	Float Cover
MT2	200	970 DIA x 375H	25mm BSPM	140psi / 965 kPa	75	DC3	AFV2	MTFC
MT6	600	1400 DIA x 520H	25mm BSPM	140psi / 965 kPa	75	DC3	AFV2	MTFC
MT12	1,200	1765 DIA x 600H	25mm BSPM	140psi / 965 kPa	75	DC3	AFV2	MTFC
MT24	2,400	2380 DIA x 650H	25mm BSPM	140psi / 965 kPa	75	DC3	AFV2	MT05
MT45	4,500	3730 DIA x 650H	25mm BSPM	140psi / 965 kPa	75	DC3	AFV2	MT04



Float + Float Cover



75mm Drain Cap



MT12



MT6



MT2



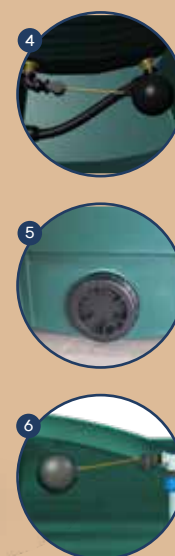
## Bare Round Water Troughs no float – Product Range

Code	Capacity (Litres)	Dimensions	Drain	Drain Cap
PT12W	250	1000 DIA x 420H	75	DC3
PT10W	500	1200 DIA x 500H	75	DC3
PT11W	1,000	1650 DIA x 600H	75	DC3
PT13W	2,000	2100 DIA x 600H	75	DC3



## Stock Water Tank & Trough – Key Features

1. Inspection cover
2. Full float cover to protect valve from stock damage
3. Inlet connection
4. 25mm float valve mounted in bottom of wall to maintain level in trough
5. 75mm drain cap in trough
6. 25mm tank inlet and 25mm float valve supplied



## Stock Water Tank & Trough – Product Range

Code	Description	Capacity	Dimensions	Float Inlet	Drain	Drain Cap	Float Cover
SWT4500	Tank & Trough Combination	4500L	2500 DIA x 2000H	25mm BSPM	75	DC3	SWTC
SWT15	Trough Only – inc Float Valve & Cover	1500L	2500 DIA x 375H	25mm BSPM	75	DC3	SWTC

# Long Water Troughs



## Supa Troughs with float – Key Features

- One-piece trough incorporating float cover
- Long lasting UV resistant polyethylene
- Flexible and durable
- Raised cover allows trough to fill fully
- 25mm Float Valve & Cover + 75mm Bung each end

## Supa Troughs with float – Product Range

Code	Description	Capacity (Litres)	Pressure	Dimensions (L x W x H)	Float cover	Float	Drain Cap
SPT5	5 foot	250	140psi / 965 kPa	1500 x 600 x 375	SPTA	AFV2	DC3
SPT9	9 foot	450	140psi / 965 kPa	2700 x 600 x 375	SPTA	AFV2	DC3
SPT12	12 foot	600	140psi / 965 kPa	3700 x 600 x 375	SPTAL	AFV2	DC3



Float + Float Cover



75mm Drain Cap





## Sweep Ballast Troughs – Key Features

- Easy cleaning - smooth sweep out end
- Flexible and durable
- Hinged float cover prevents any damage to inlet
- Tough double skin unit for extra strength
- 50mm Drain Plug
- Contoured brooms available for easy sweep out cleaning

## Sweep Ballast Troughs – Product Range

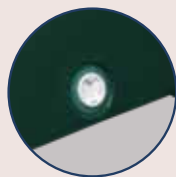
Code	Description	Capacity (Litres)	Dimensions (L x W x H)	Float Cover	Float	Broom	Drain Plug
SWP250	Trough with 25mm Float Valve	250	3492 x 580 x 350	SWP250FC	AFV2	STB250	DP2
SWP250-40	Trough with 40mm Float Valve	250	3492 x 580 x 350	SWP250FC	AFV2	STB250	DP2
SWP450	Trough with 25mm Float Valve	450	3495 x 772 x 375	SWP450FC	AFV2	STB450	DP2
SWP450-40	Trough with 40mm Float Valve	450	3495 x 772 x 375	SWP450FC	AFV2	STB450	DP2
SWP450-50	Trough with 50mm Float Valve	450	3495 x 772 x 375	SWP450FC	AFV2	STB450	DP2



Float Cover  
SWP250



Float Cover  
SWP450



Drain Cap



SWP250

SWP450



STB250

STB450

# Equine



## Fence & Stable Drinkers with float

Drinker Only	Drinker + Fence Brackets	Capacity (Litres)	Dimensions (L x W x H)	Brackets & Mounts	Float Valve	Drain Cap
PT48W	PT48WB	8	300 x 300 x 224	PT14BR	PTWK7	DC2
PT49W	PT49WB	8	440 x 380 x 350	PT14BR	AFV0L	DC2
PT50W	PT50WB	25	490 x 430 x 440	PT49BRS	AFV0L	DC2
	PT90W	90	550 x 1090 x 400	PT90BRS	AFV2	DC2



PT90W



PT48W



PT49W



PT50W

## Fence & Stable Feeders

Code	Fence Brackets	Capacity (Litres)	Dimensions (L x W x H)	Brackets & Mounts
PT02	Feeder + fence brackets	45	540 x 410 x 380	PT49BRS
PT03	Hayrack (suitable to hang on fence)		600 x 500 x 700	PT03R
PT14	Fence Feeder 'D' Type	32	440 x 400 x 250	PT14BR
PTF18	Tyre Feeder	18	350 DIA x 195H	



PTF18



PT03



PT14



PT02

## Feed Storage Bin & Handi Step

Code	Description	Dimensions (L x W x H)
FSB200	Feed Storage Bin 200L-Hinged Lid	520 x 560 x 860
HSP	Mounting Block - Handi Step 120kg SWL	700 x 520 x 670



FSB200



HSP

# Calving & Cattle



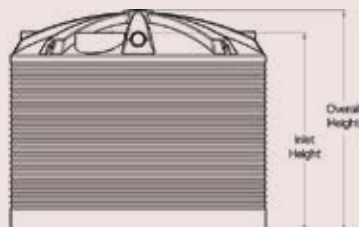
## Molasses Storage Tanks – Key Features

- Heavy duty wall thickness
- Ideal for liquids up to 1.4SG
- Standard with 80mm brass outlet and inspection cover
- Fitted with overflow as breather and screen

## Molasses Storage Tanks – Product Range

Code	Profile	Capacity (Litres)	Diameter	Overall Height	Inlet Height	Outlet Size
MOL13600	Corrugated	13,600	3100	2450	2100	80
MOL22500	Corrugated	22,500	3560	2800	2470	80
MOL31700	Corrugated	31,700	4100	3040	2610	80
MOL50KL	Smooth	50,000	4600	3440	3290	80

## Dimensions



Fit Out Clock



MOL31700

## Molasses Feeder – Key Features

- Urea feeding and bloat control
- Removable roller for cleaning
- Floating roller - no metal bearings

## Molasses Feeder – Product Range

Code	Description	Dimensions (L x W x H)
PT05	Licker Drum 100L	800 X 700 X 425
PT05C	Case only	
PT05R	Roller only	



PT05

# Calving / Lambing Milk Feeders



## Key Features

- Generous spacing between teats
- Teat caps easily unscrew to wash out feeder
- Galvanised hanging brackets to suit rail spacing
- UV stabilised poly for long outdoor use

## Calf Milk Feeders

Code	Description	Capacity (Litres)	Dimensions (L x W x H)	Brackets & Mounts	Teat & Caps	Teats
MBP	Single Teat Milk Bottle	2	100 x 180 x 250		PCT/SCIT	PCT
MM1P	Single Teat Feeder	5	200 x 200 x 300		PCT/SCIT	PCT
MM5P	5 Teat Feeder - Divisional	30	270 x 760 x 300	MM5BR	PCT/SCIT	PCT
MM8P	8 Teat Feeder - Divisional	40	340 x 1130 x 300	MM12BR	PCT/SCIT	PCT



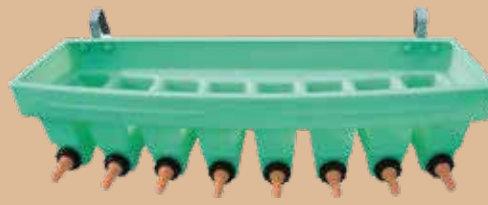
MBP



MM1P



MM5P



MM8P

## Lamb Milk Feeders

Code	Description	Capacity (Litres)	Dimensions (L x W x H)	Brackets & Mounts	Teat & Caps	Teats
MBL	Single Teat Milk Bottle	2	100 x 180 x 250		LT/SC	LT
MM1L	Single Teat Feeder	5	200 x 200 x 300		LT/SC	LT
MM5L	5 Teat Feeder - Divisional	30	270 x 760 x 300	MM5BR	LT/SC	LT
MM8L	8 Teat Feeder - Divisional	40	340 x 1130 x 300	MM12BR	LT/SC	LT



MM8L



MM5L

# Footrot Baths



## Standing – Key Features

- Control hoof diseases in sheep and goats
- Use with portable yard to keep animals confined
- Lightweight for ease of handling
- Non slip dimpled floor
- End to end linking feature
- Will not rot, rust or flake and fully chemical resistant

\*Not recommended for cattle and horses

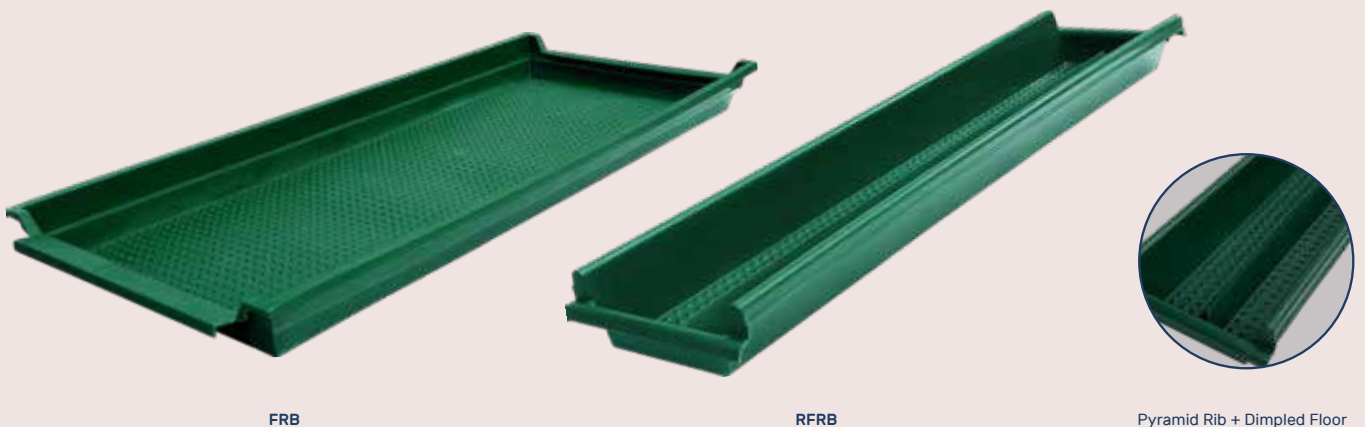
## Race – Key Features

- Control hoof diseases in sheep and goats
- Unique pyramid shaped rib through centre of trough
- Keep hooves either side of the trough
- Added strength and support to trough floor
- Reduce amount of solution needed to treat stock
- Non slip dimpled floor
- End to end linking feature is ideal for placing in sheep race
- Will not rot, rust or flake and fully chemical resistant

\*Not recommended for cattle and horses

## Product Range

Code	Description	Dimensions (L x W x H)	Capacity (Max Litres)
FRB	FRB Standing Type	2530 x 1000 x 200	300
RFRB	RFRB Race Type	2400 x 480 x 200	80



FRB

RFRB

Pyramid Rib + Dimpled Floor

# Farm Storage & Equipment



## Key Features

- Sturdy galvanised steel frame and rust proof poly tank
- Integrated forklift channels
- Rodent and weather proof
- Screw lid

## Silomaster / Cone Bottom Tanks

Dry Outlet	Liquid Outlet	Capacity (Litres)	Dimensions
SM5000D	SM5000L	5,000	2380DIA x 3030H
SM7500D	SM7500L	7,500	2380DIA x 3620H
SM10000D	SM10000L	10,000	2380DIA x 4210H
SM20000D	SM20000L	20,000	3450DIA x 4376H
SM25000D	SM25000L	25,000	3450DIA x 4923H
SM30000D	SM30000L	30,000	3450DIA x 5471H



SM30000L



SM10000L

## Heavy Duty - Suitable to hold liquids up to 1.5SG

Dry Outlet	Liquid Outlet	Capacity (Litres)	Dimensions
SM5000D-1.5	SM5000L-1.5	5,000	2380DIA x 3530H
SM7500D-1.5	SM7500L-1.5	7,500	2380DIA x 4115H
SM10000D-1.5	SM10000L-1.5	10,000	2380DIA x 4705H
SM20000D-1.5	SM20000L-1.5	20,000	3450DIA x 4376H
SM25000D-1.5	SM25000L-1.5	25,000	3450DIA x 4923H
SM30000D-1.5	SM30000L-1.5	30,000	3450DIA x 5471H



Liquid Outlet



Tank Frame Connection Pins

## Dry Feed Frame – Product Range

Code	Capacity (Litres)	Dimensions
SMDF5000	5,000	2380DIA x 3525H
SMDF7500	7,500	2380DIA x 4115H
SMDF10000	10,000	2380DIA x 4705H

## Colour Range



SMDF7500



## Dog Houses – Key Features

- Cooler in summer, warmer in winter
- Hygienic - easily washed out
- Rear venting to create airflow

## Dog Houses – Product Range

Code	Description	Dimensions (L x W x H)	Opening Size
TDD3	Log Cabin Dog House	1060 x 860 x 780	280 x 400



TDD3

## Tool Boxes – Key Features

- Flush mounted zinc hardware
- Removable internal tray included
- Raised weather resistant lid seal

## Tool Boxes – Product Range

Code	Description	Capacity (Litres)	Dimensions (L x W x H)
BUC14	B'Ute Tool Box - Small	140	970 x 400 x 360
BUC26	B'Ute Tool Box - Large	266	1170 x 570 x 400
TBC20	Tradesman Box	200	980 x 390 x 600



TBC20



BUC26

## Grain Hopper

Code	Description	Dimensions (L x W x H)
GAB2	Grain Hopper (Auger Boot) Fits 4-10 inch-Auguer	1060 x 860 x 780



GAB2

# Farm Storage & Equipment



## Bulka Bins- Key Features

- All galvanised forklift frame - lifts on/off easily
- Stainless steel chute which is rodent and weather resistant
- Extended leg models allow for bag filling
- Suitable for grains, pellets and more
- Stackable - Space Saving

## Bulka Bins - Product Range

Code	Description	Capacity (M <sup>3</sup> )	Dimensions (L x W x H)	Lid
BB12	Galvanised frame	1.2	1200 x 1500 x 1600	BBLID
BB12XL	Galvanised frame - extended legs	1.2	1200 x 1500 x 2300	BBLID
BB16	Galvanised frame	1.6	1200 x 1500 x 1860	BBLID
BB16XL	Galvanised frame - extended legs	1.6	1200 x 1500 x 2560	BBLID

Product	BB12	BB16
Wheat & Meatmeal	960kg	1200kg
Barley	750kg	1000kg
Oats	600kg	800kg
Urea	876kg	1200kg
Lucerne	300kg	400kg
Calf & Pig Pellets	800kg	1050kg



Lid



Handle



Flap



BB12



BB16

# Produce Bins & Liners



## Produce Bin – Key Features

- Stackable when full, nest them empty
- Optimum height for hand picking
- FEA analysis testing completed for strength
- Ideal pallet size for transporting
- Forklift access channels
- Food grade polyethylene

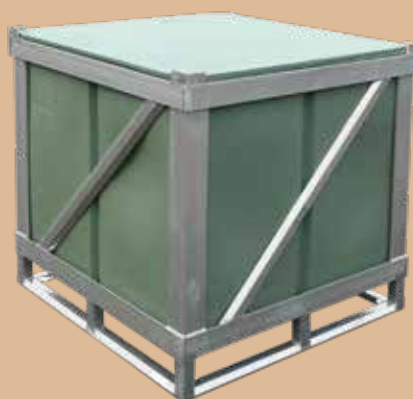
## Product Bin & Liners – Product Range

Code	Description	Capacity (Litres)	Dimensions (L x W x H)	Lid
PPB100	Produce Bin	1,000	1190 x 1190 x 1010	PPBL
PPB100FC	Produce Bin incl fork plates	1,000	1190 x 1190 x 1010	PPBL
PBL85	Liner Only	850	1110 x 1110 x 760	PBLD
PBL100	Liner Only	1,000	1110 x 1110 x 885	PBLD
PBL145	Liner Only	1,450	1110 x 1110 x 1200	PBLD
GBL	Grape Bin Liner	2,850	2170 x 1200 x 1100	GBLLIDN

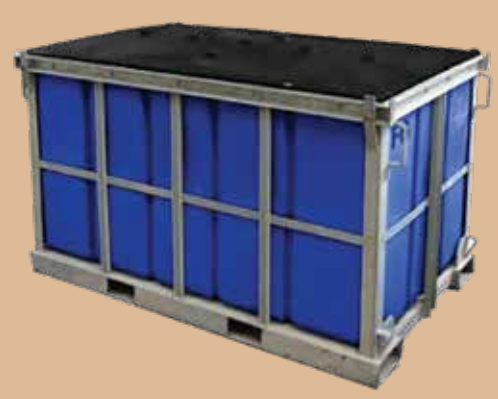
\*Steel frames not included, only shown for illustrative purposes



PPB100



PBL100



GBL

# Delivery & Installation

It is the owner's responsibility to provide clear access to site, and to secure tank/s left at site.

If the driver cannot reach the desired location, the tank/s will be left in the closest and safest location deemed possible by our driver. If the tank/s can not be left at site, the owner will incur a redelivery charge.

All products can be delivered throughout Australia. Call us for a quote for deliveries outside nominated zones.

## Delivery Requirements

Clearance required for truck and trailer is 19m long, 5m high, 3.5m wide. To put this into perspective, our trucks are longer than a semi-trailer.

It is the Owners responsibility to position the tank on the pad and to connect the tank.

Large and/or bulky products will require a lifting device (forklift etc) to unload from the truck. This is not supplied by the driver.

### Re-Scheduling Fee

Please be advised that if the Owner chooses to change the delivery date a re-scheduling fee may be incurred.

For more information visit <https://www.polymaster.com.au/news/requirements-for-tank-deliveries/>

## Polymaster Tank Installation Guide

### 1. No Entry Required

Installation of a Polymaster tank does not require entry into the tank.

### 2. Tank Site Preparation

The site must be firm, level, and flat. A concrete pad or a well-compacted sand base (75mm–100mm deep) is recommended. Other suitable bases include crushed dust or consolidated fill, free of rocks, stones, or sharp objects. The base should extend 600mm beyond the tank's diameter. A retaining wall should support the base's perimeter to prevent erosion.

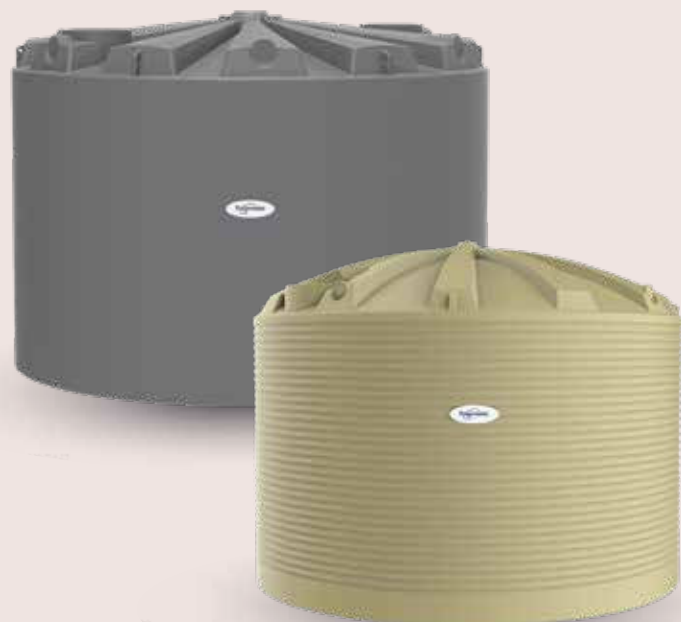
### 3. Overflow & Drainage

The overflow must be piped away from the tank to avoid undermining the base.

### 4. Plumbing & Pipework

A flexible hose (minimum 300mm/12") must be installed after the tank valve to absorb shocks and movement.

*If the tank is placed on a stand, do not support any pipework directly from the tank. Note: Failure to properly install tank as per instructions will void warranty. Never enter a tank alone. Have an attendant stand by. Restricted Space - only enter after carrying out a Hazard Identification Risk Assessment (H.I.R.A.).*



## Free Delivery (Within Zone 1)

Polymaster offers free delivery to site throughout most of Victoria, South Australia and parts of New South Wales & Queensland for tanks exceeding 13,000Ls (within zone 1). Please refer to our free delivery zone map on [polymaster.com.au/delivery-installation](http://polymaster.com.au/delivery-installation).

All tanks less than 13,000L are delivered free to store (within zone 1). A delivery fee will be incurred to deliver these tanks to site.





1800 062 064  
[polymaster.com.au](http://polymaster.com.au)

Search **Polymaster** online.



SCAN TO VIEW  
ONLINE