

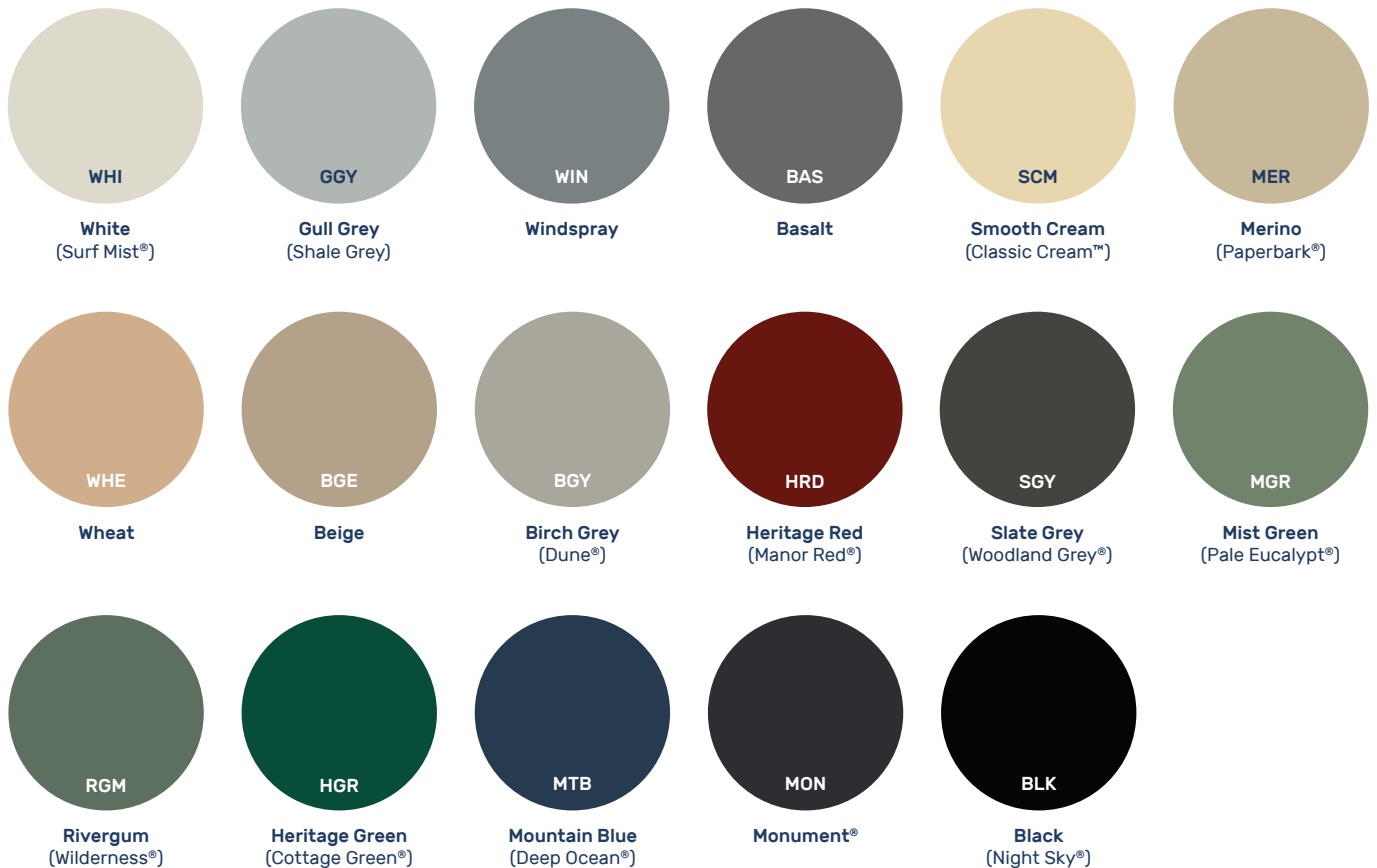


# Water Tanks



# Tank Colours

With so many choices of Colorbond® matched hues, we've made it easy to perfectly blend your new tank with your home or surroundings. This range takes the guesswork out of matching your tank colour with your exterior walls, guttering or roofing. No wonder this range is an Australian favourite.



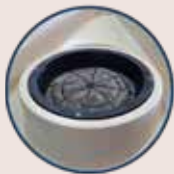
Contact us to discuss your colour project on 1800 062 064. Colours are shown for illustrative purposes only and may vary. Polymaster will not be held liable for incorrect colour impressions. Request your Polymaster colour sample to view colours. \*COLORBOND® and colour names are registered trademarks of Blue Scope Steel Ltd.™ Polymaster tank colours represented match COLORBOND® steel colours. As we process our own resin we are able to offer a vast range of custom colours, available at an additional cost.

# Water Tanks



## Key Features

- Self supporting roof means no support poles are necessary
- One piece construction means no joins or seams
- Solid brass threaded outlet & ball valve as standard
- Upgraded outlet and ball valves are available at an additional cost
- Certified to AS/NZS 4766:2006 Standard
- Outlet position can be moved from standard based on positions on the 'Fit Out Clock' (below)
- Replacement manhole covers and strainers available
- Available in 17 Colours
- 90mm overflow as standard



Strainer



Overflow



Lifting Lugs

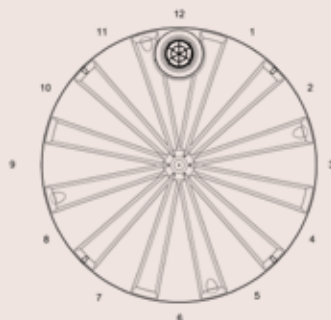
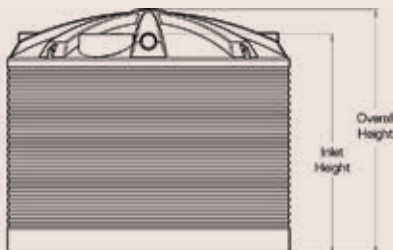


Brass Outlet



Ball Valve

## Dimensions



### Fit Out Clock

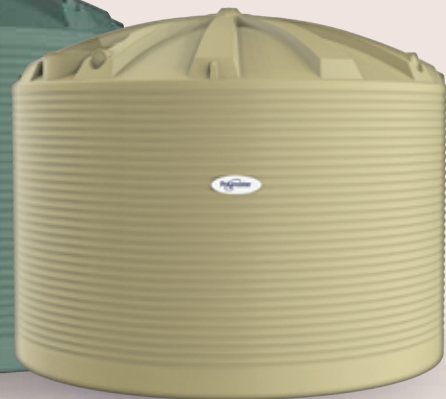
Refer to table for what overflow positions are available for each tank size.



RWT50KL



RWT31700



RWT22500

## Premium Round Water Tanks

Code	Profile	Capacity (Litres)	Diameter	Overall Height	Inlet Height	Strainer Size	Overflow (Alternative)	Outlet Size	Upgrade Ball Valve & Outlet
RWT200	Corrugated	200	600	900	900	200 (S2)	12	25	40 - BV1.5A 50 - BV2A
RWT600	Corrugated	600	1000	950	950	200 (S2)	12	25	40 - BV1.5A 50 - BV2A
RWT1000	Corrugated	1,000	1000	1500	1500	200 (S2)	12	25	40 - BV1.5A 50 - BV2A
RWT1600	Corrugated	1,600	1250	1610	1500	300 (S3)	11/4	25	40 - BV1.5A 50 - BV2A
RWT2270T*	Corrugated	2,270	1300	2000	1920	300 (S3)	11/5	25	40 - BV1.5A 50 - BV2A
RWT2270LP*	Corrugated	2,270	1700	1310	1200	400 (S4)	11/4	25	40 - BV1.5A 50 - BV2A
RWT3300	Corrugated	3,300	1520	2100	2000	300 (S3)	11/4	25	40 - BV1.5A 50 - BV2A
RWT4500T*	Corrugated	4,500	1700	2200	2100	400 (S4)	11/4	25	40 - BV1.5A 50 - BV2A 80 - BV3A
RWT4500LP*	Corrugated	4,500	2150	1580	1380	400 (S4)	11/3/7	25	40 - BV1.5A 50 - BV2A 80 - BV3A
RWT5000	Corrugated	5,000	1950	2170	1960	400 (S4)	11/3/7	25	40 - BV1.5A 50 - BV2A 80 - BV3A
RWT7100	Corrugated	7,100	2150	2300	2120	400 (S4)	11/3/7	40	50 - BV2A 80 - BV3A
RWT9000	Corrugated	9,000	2500	2260	2050	400 (S4)	11.30/2.30/ 5.30/8.30	40	50 - BV2A 80 - BV3A
RWT13600	Corrugated	13,600	3100	2450	2100	400 (S4)	11/2/5/8	40	50 - BV2A 80 - BV3A 100 - BV4A
RWT22500	Corrugated	22,500	3560	2800	2470	400 (S4)	11.30/2.30/ 5.30/8.30	40	50 - BV2A 80 - BV3A 100 - BV4A
RWT31700	Corrugated	31,700	4100	3040	2610	400 (S4)	11.30/2.30/ 5.30/8.30	40	50 - BV2A 80 - BV3A 100 - BV4A
RWT50KL	Smooth	50,000	4600	3440	3290	500 (S5)	2/4/6/8/10/12	40	50 - BV2A 80 - BV3A 100 - BV4A

\*T = Tall  
\*LP = Low Profile



# Round Water Tanks



## Key Features

- Outlet standard position is 6 o'clock
- Outlet position can be moved from standard based on positions on the 'Fit Out Clock' (below)
- Self supporting roof means no support poles are necessary
- One piece construction means no joins or seams
- Solid brass threaded outlet and ball valve as standard
- Upgraded outlet and ball valves are available at an additional cost
- Replacement manhole covers and strainers available
- Available in 17 Colours
- Certified to AS/NZS 4766:2006 Standard



Strainer



Overflow



Lifting Lugs



Brass Outlet

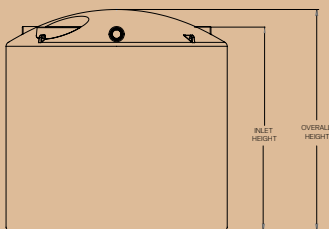


Ball Valve

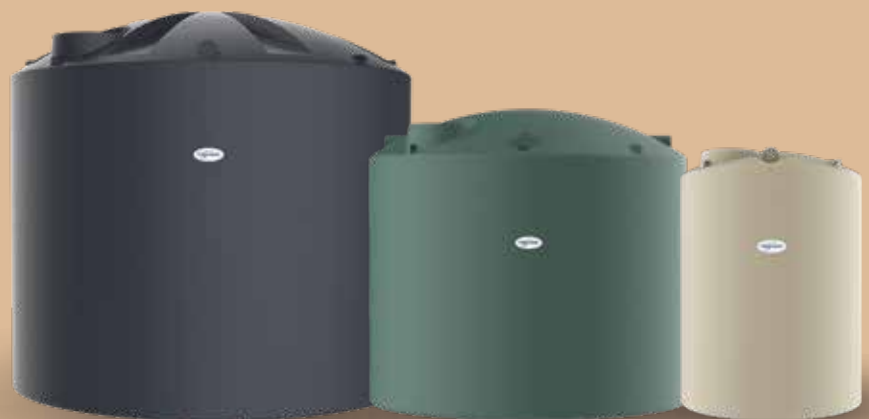
## Product Range

Code	Profile	Capacity (Litres)	Diameter	Overall Height	Inlet Height	Strainer Size	Overflow (Alternative)	Outlet Size	Upgrade Ball Valve & Outlet
PCR2000	Smooth	2,000	1175	2255	2185	300 (S3)	10.30, 1.30, 4.30, 7.30	25	40 - BV1.5A 50 - BV2A
PCR4000	Smooth	4,000	1600	2200	2150	400 (S4)	10.30, 1.30, 4.30, 7.30	25	40 - BV1.5A 50 - BV2A
PCR5000	Smooth	5,000	1800	2200	2120	400 (S4)	10.30, 1.30, 4.30, 7.30	25	40 - BV1.5A 50 - BV2A
PCR7000	Smooth	7,000	2200	2200	2020	400 (S4)	10.30, 1.30, 4.30, 7.30	25	40 - BV1.5A 50 - BV2A
PCR10000	Smooth	10,000	2480	2350	2170	400 (S4)	10.30, 1.30, 4.30, 7.30	40	50 - BV2A 80 - BV3A 100 - BV4A
PCR13500	Smooth	13,500	2830	2630	2470	500 (S5)	10.30, 1.30, 4.30, 7.30	40	50 - BV2A 80 - BV3A 100 - BV4A
PCR22500	Smooth	22,500	3573	2879	2559	500 (S5)	10.30, 1.30, 4.30, 7.30	40	50 - BV2A 80 - BV3A 100 - BV4A
PCR27000	Smooth	27,000	3573	3339	3019	500 (S5)	10.30, 1.30, 4.30, 7.30	40	50 - BV2A 80 - BV3A 100 - BV4A

## Dimensions



**Fit Out Clock**  
Refer to table for what overflow positions are available for each tank size.



PCR27000

PCR13500

PCR4000

# Underground Tanks



## Key Features

- Child-proof lid secured with tamper proof screws
- Self-anchoring
- Low profile design - minimal excavation required
- Rubber ring seal fitting provided for pipe connection.
- Tank to tank connection point
- Certified to AS/NZS 4766:2006 Standard

## Product Range

Code	Description	Capacity (Litres)	Length	Width	Height
URT3300B	Tank Only	3,300	2470	1640	1665
URT5000B	Tank Only	5,000	3520	1640	1665
URT3300VF	Tank with Vortex Filter	3,300	2470	1640	1665
URT5000VF	Tank with Vortex Filter	5,000	3520	1640	1665
URT3300VF/PC	Tank with Vortex Filter & submersible pump + auto changeover device	3,300	2470	1640	1665
URT5000VF/PC	Tank with Vortex Filter & submersible pump + auto changeover device	5,000	3520	1640	1665
URT3300VF/GP	Tank with Vortex Filter & garden pump + press control	3,300	2470	1640	1665
URT5000VF/GP	Tank with Vortex Filter & garden pump + press control	5,000	3520	1640	1665

## Pump Details

Type	Voltage	Power (KW)	Head	Flow	Warranty
Submersible Pump (PC)	220-240v	0.37kW (370 watts)	36m	82LPM	2 years
Garden Pump (GP)	220-240v	0.37kW (370 watts)	36m	82LPM	2 years

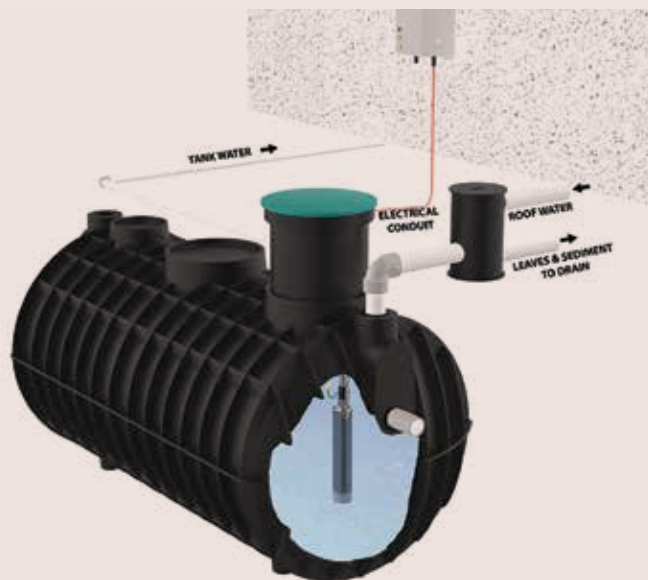
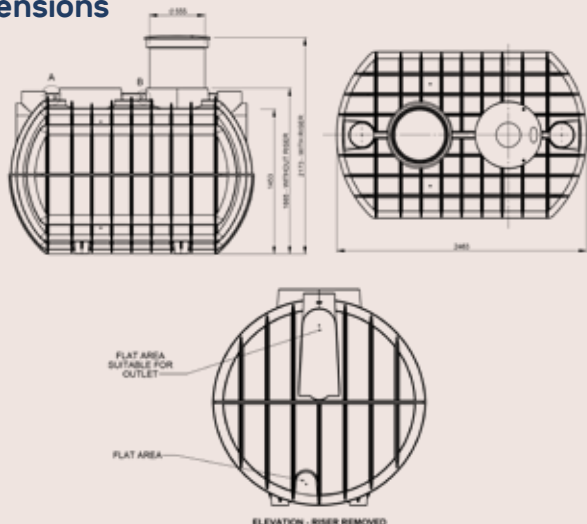
## Accessories

Code	Description
URRM	500mm Riser - for deeper installations
U-LID	Lid to suit Underground Tanks
LID-CD	Heavy Duty Class D Lid

## Vortex Fine Filter

Self cleaning filter removes sediment and debris, providing you with clean water for storage. Wall mounting bracket available. Example Setup Underground Tank with Vortex Filter and Submersible Pump options:

## Dimensions



# Slimline Tanks & Pump Options



## Key Features

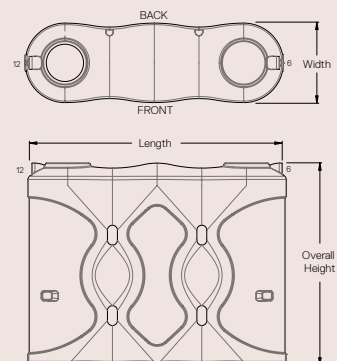
- Space saving modern design
- 25mm solid brass outlet
- Moulded handgrips for easy lifting
- 90mm overflow
- Available in 17 Colours
- Certified to AS/NZS 4766:2006 Standard

## Pump Information

Automatic Rain/Mains water changeover device designed for pressure pump supply systems in harvesting rainwater for the toilet, laundry and household applications with automatic mains backup.

\*Refer to Page 18 for Pump Details.

## Dimensions



## Product Range

Tank Only	Tank + Household Pump (HHR-370S-PC)	Tank + Garden Pump (DHJ600)	Capacity	Dimensions (L X W X H)
PCST600	-	-	600	1220 x 580 x 1265
PCST1050	PCST1050AP	PCST1050GPS	1050	1460 x 690 x 1515
PCST2000	PCST2000AP	PCST2000GPS	2000	2370 x 600 x 2010
PCST3000	PCST3000AP	PCST3000GPS	3000	2570 x 790 x 2050
PCST5000	PCST5000AP	PCST5000GPS	5000	3290 x 1020 x 2010

\*GPS models include separate pump cover (PC01)

Capacity (Litres)	Strainer (mm)	Overflow Position	Outlet Position	Outlet Size	Manhole Cover
600	300 (S3)	12 STD / 6 ALT	6 STD / 12 ALT	25	MHC9
1050	400 (S4)	12 STD / 6 ALT	6 STD / 12 ALT	25	MHC8
2000	400 (S4)	12 STD / 6 ALT	6 STD / 12 ALT	25	MHC8
3000	400 (S4)	12 STD / 6 ALT	6 STD / 12 ALT	25	MHC8
5000	400 (S4)	12 STD / 6 ALT	6 STD / 12 ALT	25	MHC8



PCST600

PCST1050

PCST2000

PCST3000

PCST5000



# Builders Tanks



## Key Features

- 10 minute quick install - pump built in, just hook it up
- Moulded handgrips for easy lifting
- 2 x 90mm overflows + 1 cap
- 2 x outlets + 1 cap
- Certified to AS/NZS 4766:2006 Standard
- Flexhose 20mm x 600mm female thread
- Hoses for connection at approximately 400mm high
- Available in 17 colours
- Fits through a standard doorway

## Pump Information

Automatic hydraulic Rain/Mains water changeover device designed for pressure pump supply systems in harvesting rainwater for the toilet, laundry and household applications with automatic mains backup.

\*Refer to Page 18 for Pump Details.

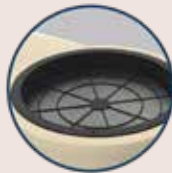
## Standard Fittings



Pump pre-installed with rain/mains changeover



Flexible hoses for quick connection



Leaf & mosquito proof mesh screen



2 x Large 90mm overflows (1 each end) + 1 cap



2 x 25mm outlets (1 each end) + 1 plug



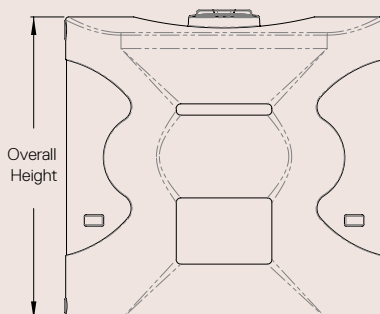
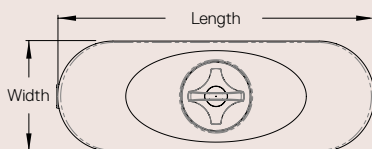
Cover to conceal pump

## Builders Tank & Pump Packages

Code	Pump Capability	Capacity (Litres)	Pump Code	Length	Width	Height	Inlet Height	Outlet (Position)	Outlet Size
BSLT2020H4	Single Storey Dwellings	2,020	MHR20-370	2105	735	2010	2010	6&12	25
BSLT2020H5	Double Storey Dwellings	2,020	MHR20-550	2105	735	2010	2010	6&12	25

Code	Description
BSLT2020PC	Pump Cover for BSLT2020
MHC8	Inspection Cover 400mm
S4	Inlet Strainer 400mm

## Dimensions



BSLT2020H4

# Accessories

## Inspection Covers

Code	Description
MHC1	Inspection Cover for 13,600L to 31,700L RWT Tanks
MHC3	Water Entry Cover for Tanks with 400mm Sieve
MHC4	Inspection Cover for Tanks with 400mm Sieve
MHC5	Inspection Cover for <b>RWT3300</b> , <b>RWT2270T</b> and <b>RWT1600</b> Tanks
MHC6	Inspection Cover for <b>RWT1000</b> , <b>RWT600</b> and <b>RWT200</b> Tanks
MHC8	Inspection Cover for Slimline Tanks 1,050L, 2,000L, 3,000L and 5,000L
MHC9	Inspection Cover for 600L Slimline Tank
MHCA	Inspection for 13,500L to 27,000L PCR Tanks + <b>RWT50KL</b>



MHC1

## Water Level Indicators

Code	Description
DPK1	Dipstick
DPK1EXT	Dipstick Extension for 50KL Tank
LT01	Levetator - Water Level Indicator
LQ02	Liquidator - Level Indicator Suitable for Corrosive Liquids



DPK1

## Other Rainwater Accessories

Code	Description
LGSO	Leaf Guard - Swivel Outlet
LWD	Downpipe Water Diverter
OFF9	90mm Overflow Flanged
OFF	Plug To Fit 90mm Overflow
OS9	90mm Overflow Screen
OFF10	100mm Overflow Flanged
PC01	Pump Cover 700L x 450W x 560H mm



LTO1

## Underground Tank Accessories

Code	Description
URRM	500mm Riser - For Deeper Installations
U-LID	Lid To Suit Underground Tanks
R10112	Uniseal 100mm



PC01

## Vortex Self-Cleaning Fine Filters

Code	Description
URVF01	Vortex Filter Suitable For Roof Areas Up To 200Sq Metres
URVF15	Vortex Filter Suitable For Roof Areas Up To 500Sq Metres
URVF30	Vortex Filter Suitable For Roof Areas Up To 3000Sq Metres
URVFR	Riser Only - For Vortex Self Cleaning Filter
URVFWM	Vortex Filter Wall Mount



URVF01

## Tank Inlet Filter

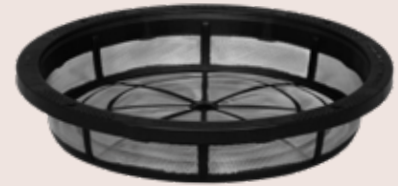
Code	Description
TIF3	Tank Inlet Filter 300mm including Sieve
TIF4	Tank Inlet Filter 400mm including Sieve



TIF4

## Inlet Strainers

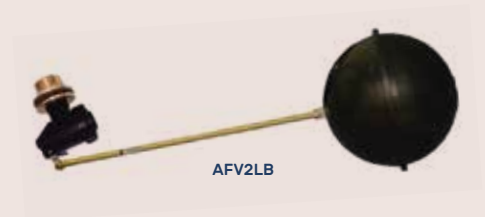
Code	Description
S2	Sieve 200mm
S3	Sieve 300mm
S4	Sieve 400mm
S5	Sieve 500mm



S4

## Rural Fire Tank Fittings

Code	Description
CFA1	65mm CFA Coupling Only (VIC)
CFA2	65mm CFA Coupling complete with 50mm (2") Outlet & Ball Valve
CFAC	Cap to suit CFA1
CFS1	65mm CFS Coupling Only (SA)
CFS2	65mm CFS Coupling (SA) Complete with 50mm (2") Outlet & Ball Valve
RFS	Rural Fire Service Fitting (NSW)
RFS2	RFS Coupling Complete (VIC Metro, NSW Rural)



AFV2LB

## Fittings for Pipeline Tanks

Code	Description
AFV2L-A	25mm (1") plastic Sleeve Valve - Long Arm
AFV2LB	25mm (1") including 1.25" M & F Brass Outlet Plastic Sleeve Valve - Long Arm
AFV3B	32mm (1¼") Plastic Sleeve Valve - High Volume incl 40mm (1½") M & F Brass outlet. Pressure range 0 - 450kpa (0 - 65psi)
AFV4B	40mm (1½") Plastic Sleeve Valve - High Volume incl 50mm (2") M & F Brass Outlet. Pressure range 0 - 450kpa (0 - 65psi)
AFV5B	50mm (2") Plastic Sleeve Valve - High Volume incl 2½" M & F Brass Outlet. Pressure range 0 - 450kpa (0 - 65psi)
PLTIP25	Pipeline Tank Internal Pipework 25mm
PLTIP40	Pipeline Tank Internal Pipework 40mm
PT2132	32mm (1 1/4") Dual Level reservoir valve
PT2140	40mm (1 1/2") Dual Level reservoir valve
PT2150	50mm (2") Dual Level reservoir valve



LH01.5



BV1.5

## Brass Outlets

Code	Description
LH01	25mm (1") M+F
LH01.5	40mm (1.5") M+F
LH02	50mm (2") M+F
LH03	(3") 80mm M

## Brass Ball Valves

Code	Description
BV1	25mm (1")
BV1.5	40mm (1.5")
BV2	50mm (2")
BV3	80mm (3")

## Stainless Steel Outlets

Code	Description
LH01SS	25mm (1") M+F SS
LH01.5SS	40mm (1.5") M+F SS
LH02SS	50mm (2") M+F SS
LH03SS	80mm (3") M SS

## Stainless Steel Ball Valves

Code	Description
SSBV1	25mm (1") SS
SSBV1.5	40mm (1.5") SS
SSBV2	50mm (2") SS
SSBV3	80mm (3") SS

# Water Pumps

## Household Pumps with Brass Rain/Mains Changeover Device

Code	Description	Wattage	Max Flow (LPM)	Power (kW)	Inlet	Outlet	Warranty
MHR20-370	Single Story Pump	370W	55	0.37	25mm BSPF	20mm BSPF	3 years
MHR20-550	Double Story Pump	550W	70	0.55	25mm BSPF	20mm BSPF	3 years

## Submersible Pumps

Code	Description	Wattage	Max Flow (LPM)	Power (kW)	Inlet	Outlet	Warranty
HHR-370S-PC	Pump & Press Control	370W	82	0.37	5m	20mm BSPM	2 years
HHR-370S-PC+CO	Pump w/ Press Control & Change-over Device	370W	82	0.37	5m	32mm BSPF	2 years

## Garden Pumps with Press Control

Code	Description	Wattage	Max Flow (LPM)	Power (kW)	Inlet	Outlet	Warranty
DHJ600	Pump & Press Control	600W	45	0.6	25mm BSPF	25mm BSPM	2 years
DHJ800	Pump & Press Control	800W	55	0.8	25mm BSPF	25mm BSPM	2 years
HSJ1000	Pump & Press Control	1000W	85	1	25mm BSPF	25mm BSPM	3 years



HHR-370S-PC



HHR-370S-PC+CO



MHR20-370



MHR20-550



DHJ600



DHJ800



HSJ1000



# Delivery & Installation

It is the owner's responsibility to provide clear access to site, and to secure tank/s left at site.

If the driver cannot reach the desired location, the tank/s will be left in the closest and safest location deemed possible by our driver. If the tank/s can not be left at site, the owner will incur a redelivery charge.

All products can be delivered throughout Australia. Call us for a quote for deliveries outside nominated zones.

## Delivery Requirements

Clearance required for truck and trailer is 19m long, 5m high, 3.5m wide. To put this into perspective, our trucks are longer than a semi-trailer.

It is the Owners responsibility to position the tank on the pad and to connect the tank.

Large and/or bulky products will require a lifting device (forklift etc) to unload from the truck. This is not supplied by the driver.

### Re-Scheduling Fee

Please be advised that if the Owner chooses to change the delivery date a re-scheduling fee may be incurred.

For more information visit <https://www.polymaster.com.au/news/requirements-for-tank-deliveries/>

## Polymaster Tank Installation Guide

### 1. No Entry Required

Installation of a Polymaster tank does not require entry into the tank.

### 2. Tank Site Preparation

The site must be firm, level, and flat. A concrete pad or a well-compacted sand base (75mm–100mm deep) is recommended. Other suitable bases include crushed dust or consolidated fill, free of rocks, stones, or sharp objects. The base should extend 600mm beyond the tank's diameter. A retaining wall should support the base's perimeter to prevent erosion.

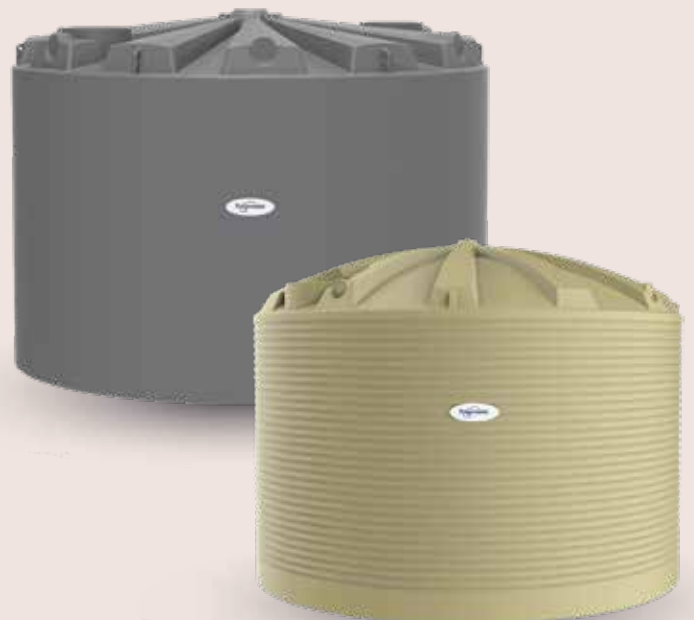
### 3. Overflow & Drainage

The overflow must be piped away from the tank to avoid undermining the base.

### 4. Plumbing & Pipework

A flexible hose (minimum 300mm/12") must be installed after the tank valve to absorb shocks and movement.

*If the tank is placed on a stand, do not support any pipework directly from the tank. Note: Failure to properly install tank as per instructions will void warranty. Never enter a tank alone. Have an attendant stand by. Restricted Space - only enter after carrying out a Hazard Identification Risk Assessment (H.I.R.A.).*



## Free Delivery (Within Zone 1)

Polymaster offers free delivery to site throughout most of Victoria, South Australia and parts of New South Wales & Queensland for tanks exceeding 13,000Ls (within zone 1). Please refer to our free delivery zone map on [polymaster.com.au/delivery-installation](http://polymaster.com.au/delivery-installation).

All tanks less than 13,000L are delivered free to store (within zone 1). A delivery fee will be incurred to deliver these tanks to site.





Polymaster

Precision  
Engineered perfection.





Polymaster



1800 062 064  
[polymaster.com.au](http://polymaster.com.au)

Search **Polymaster** online.



SCAN TO VIEW  
ONLINE